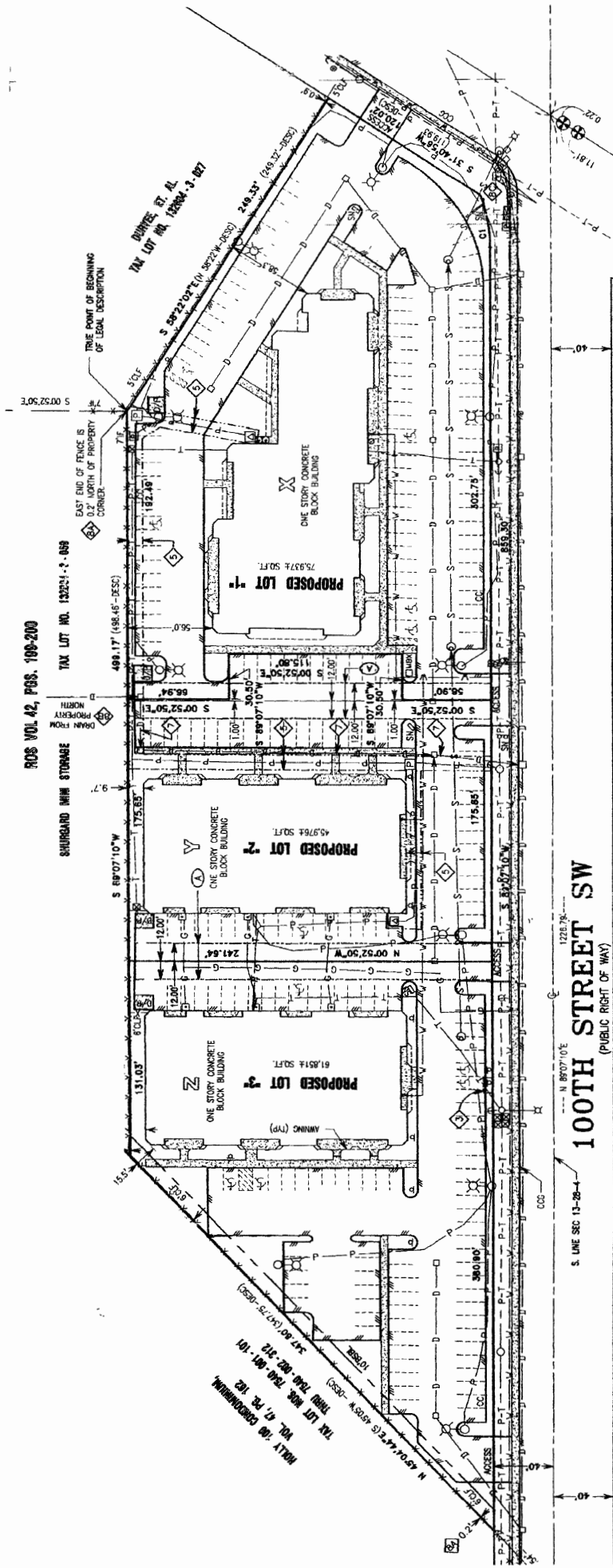


EVERETT BUSINESS PARK



LOT	BUILDING	RENTABLE SQUARE FEET (RSF)	ZONING	PARKING SPACES	PARKING SPACES PER 1000 RSF
1	X	18,251	C-1	103	5.64
2	Y	15,726	C-1	65	4.13
3	Z	15,726	C-1	87	5.53
TOTAL		49,703		255	5.13